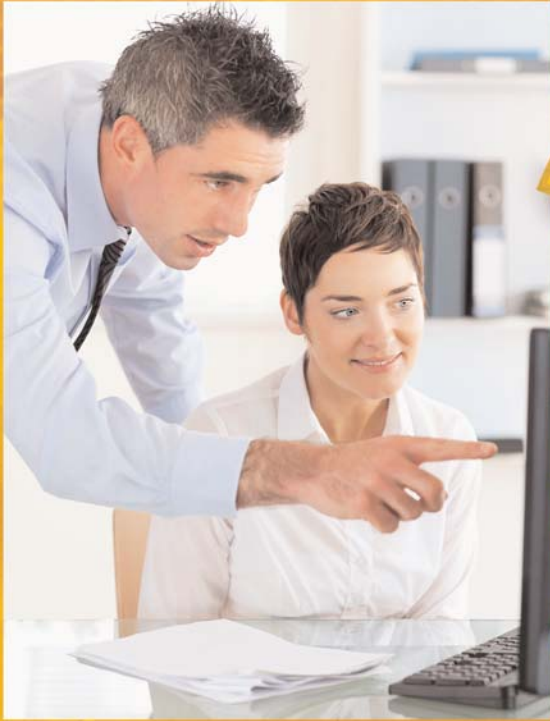


**LANIER**

# SP 4410SF



DESKTOP B/W LASER MFP

*All-purpose—all the time*

*Take advantage of efficient black-and-white multifunction performance and complete a wider range of general office tasks quickly and conveniently*



# Discover the easier way to improve productivity

For fast-paced smaller offices and workgroups, each day offers something different. Now you can multi-task easily and economically to meet unique workflow requests while delivering the consistent, reliable and cost-effective results your business needs to thrive. The versatile LANIER® SP 4410SF Desktop Black-and-White Laser MFP improves productivity through a wide range of innovative, convenient capabilities, including copying, printing, scanning and faxing. Use it to create and share compelling documents quickly and seamlessly without compromising your budget.

With its compact design, the Lanier SP 4410SF can meet your general office needs for the entire staff or be part of a comprehensive Lanier Managed Document Services (MDS) strategy to improve the three fundamental parts of document management—input, throughput and output.

## **Perform More Tasks**

**The robust Lanier SP 4410SF offers full networking capability and integrated copy/print/scan/fax performance to deliver impressive results for everyday projects—every time.**

- Retrieve documents quickly with a 40 page-per-minute print/copy speed and a fast first print speed of 6.5 seconds.
- Create sharp, impressive documents with crisp text at up to 1200 x 1200 dpi resolution.
- Share documents easily and efficiently with color and black-and-white two-sided scanning capabilities. Distribute the files from the SP 4410SF via e-mail, FTP, USB flash drive or the network.
- Enhance productivity with automatic duplexing and a standard 50-sheet Automatic Reversing Document Feeder (ARDF) for faster two-sided printing, copying and scanning.
- Streamline workflow by increasing paper supply to 850 sheets without increasing the footprint, while taking advantage of optional wireless connectivity and an 80 GB hard disk drive.



**The Lanier SP 4410SF packs black-and-white multifunction performance into a compact, convenient design for budget-conscious general office users.**

- Fax documents in seconds and reduce long-distance charges with a 33.6 Kbps Super G3 modem, built-in PC faxing, Fax Forwarding, LDAP lookup and support for third party fax servers for even more fax workflow possibilities.
- Print on diverse media types—including envelopes, labels and card stock—via the built-in 50-sheet Bypass Tray, without removing paper from the main tray.
- Combine one or more sets of originals into a single job from the ARDF or platen with the Custom Job Build feature (requires optional hard disk drive).

## Manage Effectively

Engineered for economical performance, the Lanier SP 4410SF offers a host of operational features that streamline workflows.

- Quickly remove, replace and recycle a spent toner cartridge or drum without technical support for maximum device uptime.
- Store print jobs with encrypted data at the SP 4410SF with the optional hard disk drive. Authorized users can release the job with the swipe of an ID card or by entering a PIN at the control panel.
- Complete jobs and view system status almost instantly with the intuitive, 7-inch, full-color operation panel. The touchscreen panel offers easy one-touch access to all basic and advanced device functions.
- Configure and modify device settings, monitor supply status for proactive maintenance, print reports, and more from the desktop with the Embedded Web Server utility.

## Access Greater Savings

The compact, desktop design offers flexibility for placement in more office environments—so you can perform all of your general office tasks from a single device without compromising floor space or your budget.

- Access all key functions, paper sources and even the print cartridge via a forward-facing desktop design.
- Scan to or print from a flash drive with the USB 2.0 interface easily. Simply walk up to the device, insert the flash drive, select PDF, JPEG, TIFF, or XPS and start scanning or printing—all without a computer.
- Accommodate a wide range of media sizes—including up to 8.5" x 14" documents—and print letterhead, envelopes, presentations and other important business documents.



*The intuitive, adjustable, full-color LCD control panel enables users to execute jobs and view system status in seconds. For secure environments, a touchscreen lockout is available.*



*For users on the go, a USB port is conveniently located on the front panel for fast, easy walk-up printing to and scanning from the SP 4410SF with a USB memory drive.*

## The Total Green Office Solution



Lanier continues its long-standing commitment to developing office solutions with environmentally friendly and superior energy- and supply-saving features, without compromising productivity.

**LANIER****SP 4410SF****MAIN UNIT**

<b>Configuration Technology</b>	Desktop Monochrome Laser MFP Laser beam scanning & electrophotographic printing with monocomponent toner development
<b>Control Panel</b>	Adjustable 7" color touch-screen display with integrated 17-key alphanumeric keypad
<b>Print Resolution</b>	300 x 300 dpi, 600 x 600 dpi, 1200 x 1200 dpi (at approx. 50% productivity), 1200 Image Quality, 2400 Image Quality 40 ppm/cpm (Letter)
<b>Print/Copy Speed</b>	6.5 seconds
<b>First Print Speed</b>	2 minutes, 35 seconds from Cold Start;
<b>Warm-Up Time</b>	30 seconds or less from Standby
<b>Operating Systems</b>	Windows XP, Vista, 7, Server 2003/2003R2, Server 2008/2008R2 Mac OS X v.10.4+ IBM AIX; Novell 5.x, 6.x; Citrix Presentation Server; Various UNIX/Linux
<b>Software Utilities</b>	@Remote compatible, Embedded Web Server
<b>Standard Paper Supply</b>	250-sheet Tray + 50-sheet Bypass Tray = 300 sheets
<b>Optional Paper Supply</b>	550-sheet Paper Feed Unit 250-sheet Paper Feed Unit (only 1 drawer may be installed) 50 sheets
<b>Automatic Reversing Document Feeder (ARDF)</b>	50 sheets
<b>Maximum Paper Capacity</b>	850 sheets
<b>Output Capacity</b>	150-sheet Internal Tray, face down
<b>Automatic Duplexing</b>	Standard
<b>Acceptable Paper Sizes</b>	Standard Tray: Letter (8.5" x 11"), Legal (8.5" x 14"), Executive (7.25" x 10.5"), Statement (5.5" x 8.5"), A4 (210 x 297 mm), A5 (148 x 210 mm), A6 (105 x 148 mm), JIS B5 (182 x 257 mm), Folio (8.5" x 13"), Oficio (8.5" x 13.4") Custom Size Range (Universal): 3.0" x 5.0" to 8.5" x 14" (76.2 x 127 mm to 216 x 355.6 mm) Bypass Tray: Letter (8.5" x 11"), Legal (8.5" x 14"), Executive (7.25" x 10.5"), Statement (5.5" x 8.5"), A4 (210 x 297 mm), A5 (148 x 210 mm), A6 (105 x 148 mm), JIS B5 (182 x 257 mm), Folio (8.5" x 13"), Oficio (8.5" x 13.4") Custom Size Range (Universal): 3.0" x 5.0" to 8.5" x 14" (76.2 x 127 mm to 216 x 355.6 mm) Envelopes: 3.87" x 6.38" to 6.93" x 9.84" (98.4 x 162 mm to 176 x 250 mm) Optional PFUs: Letter (8.5" x 11"), Legal (8.5" x 14"), Executive (7.25" x 10.5"), Statement (5.5" x 8.5"), A4 (210 x 297 mm), A5 (148 x 210 mm), JIS B5 (182 x 257 mm), Folio (8.5" x 13"), Oficio (8.5" x 13.4")
<b>Acceptable Paper Weights</b>	Standard and Optional Trays: 16 – 24 lb. Bond (60 – 90 g/m <sup>2</sup> ) Bypass Tray: 16 – 43 lb. Bond/90 lb. Index (60 – 163 g/m <sup>2</sup> )
<b>Acceptable Paper Types</b>	Standard Tray: Plain Paper, Transparencies, Labels Bypass Tray: Plain Paper, Transparencies, Labels, Card Stock, Envelopes
<b>Dimensions (WxDxH)</b>	Optional PFUs: Plain Paper, Labels 19.2" x 17.2" x 20.9" (488 x 438 x 531 mm)
<b>Weight</b>	50 lb. (22.7 kg or less)
<b>Power Requirements</b>	100 – 127V, 50/60Hz
<b>Power Consumption</b>	Power Save Mode: 25 W Continuous Copying: 560 W Continuous Printing: 540 W

**Safety Regulations** UL60950-1, CAN/CSA C22.2 No. 60950-1-03, FCC Class B Parts 2, 15 and 68, ICES-003

**Environmental Standard** Energy Star, BAM, RoHS compliant

**PRINT CONTROLLER**

<b>CPU</b>	500MHz 32-bit processor
<b>Printer Languages/ Drivers</b>	PCL 5e, PCL 6, PS3 emulation, PPD, XPS, PDF Direct Print v1.6, xHTML, Direct Image
<b>Fonts</b>	PCL: 89 scalable fonts + 2 bitmapped fonts PostScript3: 91 scalable fonts PPD: 39 scalable fonts + 5 bitmapped fonts
<b>Memory</b>	128 MB RAM standard 640 MB RAM maximum Optional 80 GB HDD
<b>Hard Disk Drive</b>	10/100Base-TX Ethernet (RJ-45), Rear USB 2.0 Hi Speed Type B (for PC connection), Rear USB 2.0 Host Interface Type A (for Card Reader), Front USB 2.0 Interface Type A (for Scan-To/Print From), Internal Card Slot
<b>Standard Interfaces</b>	IEEE 802.11b/g/n Wireless Interface TCP/IP (IPv4, IPv6), IPX/SPX, Apple Talk, Bonjour
<b>Optional Interface</b>	IEEE 802.11b/g/n Wireless Interface
<b>Network Protocols</b>	TCP/IP (IPv4, IPv6), IPX/SPX, Apple Talk, Bonjour

**COPIER**

<b>Multi-copy Speed</b>	40 cpm (Letter)
<b>First Copy Speed</b>	Less than 10.3 seconds (ARDF, LTR, Text or Text/Photo)
<b>Copy Resolution</b>	600 x 600 dpi
<b>Set Quantity</b>	1 – 999 copies
<b>Original Type</b>	Sheets/Books/3D objects
<b>Original Size</b>	Up to 8.5" x 14" (Platen and ARDF)
<b>Zoom</b>	25% – 400% in 1% increments

**SCANNER**

<b>Scanner Type</b>	Color/Monochrome flatbed CCD scanner with ARDF
<b>Scanning Resolution</b>	600 x 600 dpi (black and white) 600 x 300 dpi (full-color)
<b>Scanning Speed (via ARDF)</b>	Black and White: Up to 35 scans-per-minute (simplex) Full-Color: Up to 20 scans-per-minute (simplex)
<b>Maximum Scan Area</b>	Via Platen: Up to 8.5" x 14" Via ARDF: 5.0" x 5.5" to 8.5" x 14"
<b>Scan Interface</b>	Full-speed USB 2.0, 10/100Base-TX Ethernet
<b>File Formats Supported</b>	PDF, Secure PDF, JPEG, TIFF, XPS
<b>Scanning Capabilities</b>	USB TWAIN Scanning, Network TWAIN Scanning (Scan-to-PC), Scan-to-Email, Scan-to-FTP, Scan-to-Network Folder, Scan-to-USB Flash Drive

**FACSIMILE**

<b>Modem Type/Speed</b>	Super G3 @ 33.6 Kbps
<b>Transmission Speed</b>	Up to 3 seconds per page
<b>Resolution</b>	Standard: 200 x 100 dpi Fine: 200 x 200 dpi Super Fine: 300 x 300 dpi Ultra Fine: 600 x 600 dpi
<b>Speed Dials</b>	500 locations (without optional HDD) 4,000 locations (with optional HDD)
<b>Broadcast Fax</b>	400 locations
<b>Compression Method</b>	MH/MR/MMR/JBIG + JPEG for Color Fax transmission
<b>Fax from PC</b>	Supported using PostScript driver

**CONTROLLER & MEMORY OPTIONS**

IEEE 802.11b/g/n Wireless LAN Type 4400
256 MB Memory Type 4400
512 MB Memory Type 4400
80 GB Hard Disk Drive Type 4400

**SECURITY**

Access Control, Security Audit Log, Touch Screen Lockout\*, HTTPS support, SNMP v3 support, Disable Ports & Protocols, 802.1x Authentication, Confidential Print\*, AES-256-bit Hard Disk Encryption\*, Hard Disk Wiping\*, Restricted Server List function  
\*Requires optional 80 GB hard disk drive.

**HARDWARE ACCESSORIES**

<b>Paper Feed Unit TK1170</b>	
<b>Capacity</b>	250 sheets
<b>Paper Sizes</b>	5.5" x 8.5" to 8.5" x 14" (139.7 x 216 mm to 216 x 356 mm)
<b>Paper Weights</b>	16 – 24 lb. Bond (60 – 90 g/m <sup>2</sup> )
<b>Dimensions (WxDxH)</b>	15.98" x 14.45" x 3.5" (406 x 367 x 89 mm)
<b>Weight</b>	5.6 lb. (2.55 kg)
<b>Paper Feed Unit TK1180</b>	
<b>Capacity</b>	550 sheets
<b>Paper Sizes</b>	5.5" x 8.5" to 8.5" x 14" (139.7 x 216 mm to 216 x 356 mm)
<b>Paper Weights</b>	16 – 24 lb. Bond (60 – 90 g/m <sup>2</sup> )
<b>Dimensions (WxDxH)</b>	15.98" x 15.24" x 5.08" (406 x 387 x 103.5 mm)
<b>Weight</b>	7.2 lb. (3.23 kg)

**CONSUMABLES**

Item	Yield
<b>Black Toner Cartridge SP 4400R**</b>	18,000 pages* (Return Program)
<b>Photoconductor Unit (PCU) SP 4400</b>	30,000 pages

\*Declared yield values based on ISO/IEC 19752. Actual yields may vary based on types of images printed and other factors.

\*\*An 18,000 page (ISO/IEC 19752) Non-Return Black Toner Cartridge is also available. Please contact your Lanier Representative for further details.

The Lanier SP 4410SF ships with starter print cartridges that yield 7,000 pages. All other consumables ship at full yield.

For maximum performance and yield, we recommend using genuine Lanier parts and supplies.

Specifications subject to change without notice.

**WARRANTY**

The Lanier SP 4410SF comes with a one year warranty. Please refer to the written warranty that comes with the product.



[www.lanier.com](http://www.lanier.com)

Lanier Five Dedrick Place, West Caldwell, NJ 07006

©2011 Lanier is a registered trademark of Ricoh Americas Corporation. All rights reserved. All other trademarks are the property of their respective owners. The content of this document, and the appearance, features and specifications of Lanier products and services are subject to change from time to time without notice. Products are shown with optional features. While care has been taken to ensure the accuracy of this information, Lanier makes no representation or warranties about the accuracy, completeness or adequacy of the information contained herein, and shall not be liable for any errors or omissions in these materials. Actual results will vary depending upon use of the products and services, and the conditions and factors affecting performance. The only warranties for Lanier products and services are as set forth in the express warranty statements accompanying them.

L3310

